



www.improvementqhse.com
PT RIMAR SOLUSI TANGGUH
Improvement, Assessment, Setting System & Training

TABLE OF CONTENTS



01

ABOUT US

03

OUR SERVICES

02

OUR CLIENTS

04

OUR IMPROVEMENTS AT CLIENTS

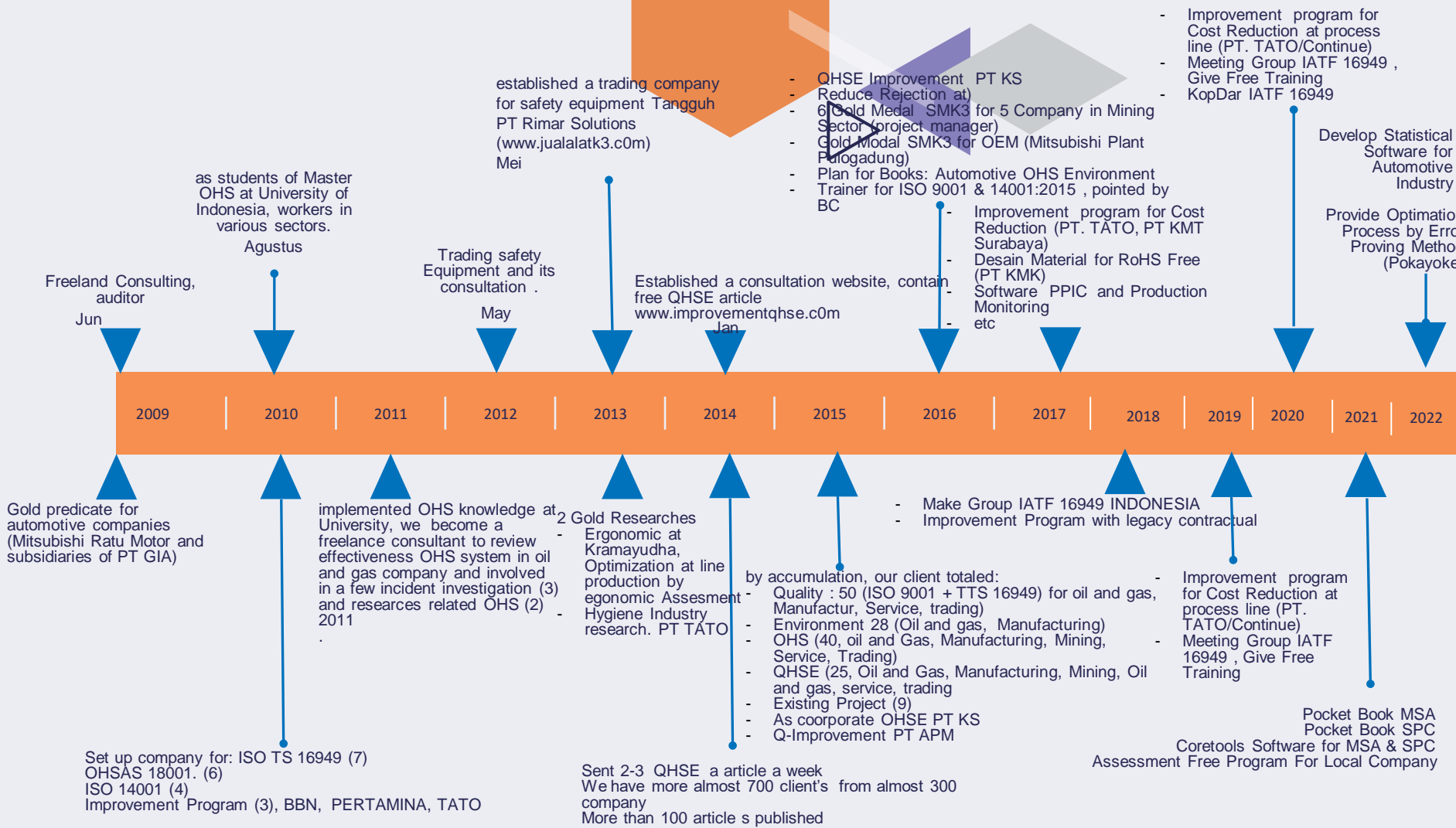




- Started in Group-Discussion-Student in Magister OHS University of Indonesia, as Magister student from all professional fields: Automotive Manufacturing, Mining, Oil and gas, IT, Electronic Manufacturing and Doctor
- Handle first client : Mitsubishi Ratu Motor (Hino, L300, Outlander) and Project Set System in Oil and Gas Field Pertamina- Benaka in Pendop Sumsel
- Supplier and Consultant Safety and Equipment
- Research in Industry which that reports as our journal, thesis report that we share to clients
- Established www.improvementqhse.com as our contribution in Indonesia's Industry
- Involve set QHSE system
- Improvement Project :
 - Reduce Defect product at line process by PFMEA and Ergo Concept
 - Assessment Process (Production, Warehouse/storage)
 - Assessment OHS (Fire System and Ergonomic for Productivity)
 - Optimization Water Treatment
- Coordinator Group Automotive Engineer (association) in Indonesia

01

ABOUT US





02

OUR CLIENTS

You could enter a subtitle here if you need it

03

OUR SERVICES



ENGINEERING ENVIRONMENT & ERROR PROVING

Set Up Pokayoke/Error
Proving
Research at your
Manufacturing Line



STATISTICAL MGT SYSTEM PROGRAM

Software Development
For Statistical Industry
(SPC, MSA, FMEA,
APQP, AUDIT,
PERFORMANCE)



ASSESSMENT FOR CORRECTIVE ACTION

Assessment for
Productivity by FMEA
and Ergonomic
Approach

Assesment for Fire
Assessment for
Ergonomic



IMPROVEMENT CONSULTATION

Reduce Defect product
(using tool FMEA and
Ergonomic Concept)
Started by Assessment
Process using tool IATF
16949 & Core tools
(FMEA, SPC, MSA,
APQP+PPAP/VDA)



TRAINING & SET UP MGT SYSTEM & TRADING EACH STANDARD

Coretools, IATF 16949,
TPM, Kaizen, Lean
Mfg, 5S, Problem
Solving, Leadership
Communication, Safety
(WAH, Ergonomic, etc),
ISO 9K, 14K, 45K,,
SMK3, 5S,



04

OUR IMPROVEMENTS AT CLIENTS

No	Title Project	Achievement	Client	Year	Record
	Failure Analysis	Giving the cause of the failure of a broken bolt and nut material and the company can be the replacement of material suppliers in South Korea	PT BUKIT BAJA NUSANTARA	2009	Report
	Causes defect at electroless after Weldes	Failure analysis on the process of electroless after electroless welding	PT Indonesia TRC Industry	2011	Thesis Report
	Find causes Fungi on lock	Analyzing the causes of the fungus on the product key motor with P-FMEA method	PT HONDA LOCK	2012	FMEA report
	Failure at Blow Molding	Failure analysis (bone defect) in the production of plastic products with Blow Molding with PFMEA analysis	KEVIN PERSADA MANDIRI	2012	-
	Review Ergonomic at Line-13	Improvement with Ergonomic assesment at production line for Assembling Car L-300, PT Kramayudha Ratu Motor. <i>Changing Line was carried out at Line-13, and final report published on Journal-UI 2013 and final report for Magister</i>	PT KRAMAYUDHA RATU MOTOR	2013	Thesis Report
	Reducing Defect Sticker Painting	Giving the cause and decrease defect painting from 10% to 5% on the product sticker Honda Vario and techno	PT TATO DECOVISIGN	2013	Report
	Welding And Ergonomic	Improvement with Ergonomic assesment at Spot Welding Line,. Set spot welding area more comfortable and productive Improvement with Ergonomic Assesment at Stamping Line	PT Dina Karya Pratama, 2013	2013	Report Assesment
	Evaluasi Exposure/ Pajanan Thinner (Toluen)	Enhance Productivity in Printing Process by Reduce Toluen Exposure,	PT-TATO Printing	2014	Seminar Thesis Report

No	Title Project	Achievement	Client	Year	Record
9	Ergonomic Relayout	Relayout unproductive process (Blanking, Barrel, Grinding, Inspection and at warehouse activity by Ergonomic Assesment	PT SAITAMA STAMPING INDONESIA	2015	Report Training and Achievement
0	Separate oil and water	Plan: (separete oil from water of coolant at mold-washing process)	PT INDONESIA EAGLE INDUSTRY	2015	HSE Report
1	Dust Control for prevent Fire and Explotion	Recommendations for existing and New Factory (Tuban)	PT DRY MIX	2015	Management Presentation
2	Enhance Safety Culture at Boring Process for Oil at site Pendopo	Redevelopment Process Business and integrated QHSE system	PT KSO Pertamina-Benakat	2013 - 2015	Management Presentation
3	Analysis Cold Temperature	Plan: (Analysis factor dizziness symptoms and blood pressure in the freezer warehouse workers with low temperatures (-23 C)	PT NOF MAS CHEMICAL INDUSTRY	2015	Recommendation Report
4	Safety Norm	Establish Safety as Norm or culture in hot work process by reason action theory :inspection, audit and coaching)	PT KOKOH SEMESTA	2016	HSE report
5	Enhance Safety Performance through Management Strategic in Coal Mining Area (specially for critically outsourced process)	Gold Achievement SMK3 from Government and Reduce frequency of truck Incident	PT IWACO PT BIMA PT NARIKI PT MHA PT HANWHA	2015 - 2016	Article
6	Reduce Work Pressure in Lab QC by SPC program (lab Heat treatment)	SPC program	PT DOWA THERMOTECH INDONESIA	2016	SPC program

No	Title Project	Achievement	Client	Year	Record
17	Production Planning at Printing Factory	<ul style="list-style-type: none"> - Controlling Lot and Product - Achievement Capacity 	PT TATO	2019	Reporting
18	Finance and Warehouse Management for Trucking-rental Company (68 trucks)	<ul style="list-style-type: none"> - Software Finance that controlling Order until payment - Software controlling at Warehouse - System by Racking for all Spare Part 	PT. KARYA MULIA TRASINDO (Surabaya)	2018	Presentation Report
19	Productivity Improvement at Line Assembling by Ergonomic Assessment	<ul style="list-style-type: none"> - Improvement at Assy "Safety Belt" Line by Reduce Cycle time Assy Process - Improvement by Racking Desain at Material and Finish Good Storage - Fire Protection Improvement (reporting assessment) 	PT AUTOLIV INDONESIA	2018	Presentation Report
20	Planning Production for Auto machine Production	Provide Programming Which Control Planning Process for Production + ASSY	PT ARTECH PRESISI MESINDI	2018	Presentation Report
21	Planning Production for Buoy Maker (Mercusuar)	Provide Programming Which Control Planning Process for Production + ASSY Buoy	PT SARANA SAMUDRA RAYA	2019	Presentation Report
22	NG Reduction	<ul style="list-style-type: none"> - Review and Corrective Fundamental function: Separate clearly Engineering & QC Dept - Established New Model Concept and team - Standardize parameter main process (printing and Clear) - MSA Study for Inspector 	PT TATO	2021	Reporting
23	Coretool IATF 16949	Small Software for 20 Modul SPC and MSA	Private	2022	Software



05

WHY US

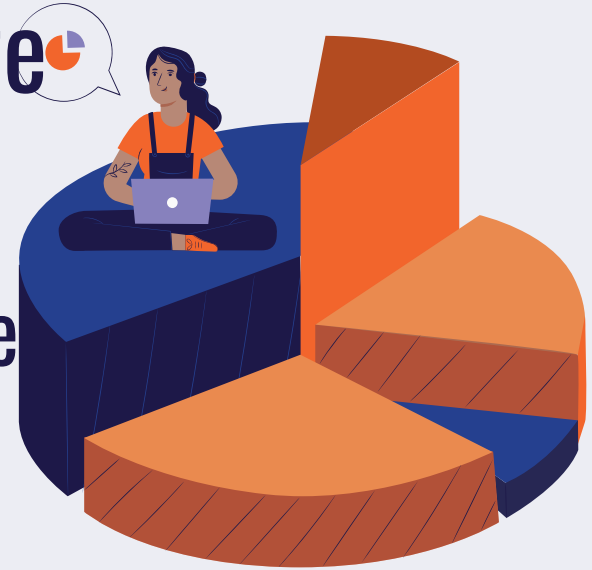


See our free article on Website

www.improvementqhse.com

All from our Client then for every one

Important note from Consultation and observation/research are published on www.improvementqhse.com





FREE CONSULTATION

Group discussion for all Automotive Engineer

- IATF 16949 INDONESIA
- MSA INDONESIA
- SPC INDONESIA

Free Seminar (KOPDAR)
STATISTICAL SURVEY





EXPERT CONSULTANT

All is Magister



Member of Automotive AIAG.org

Board Member Companies

Adient
Aptiv
BAE Systems
Caterpillar Inc.
Continental Automotive Systems, Inc
Dana Incorporated
DENSO International America, Inc.
Eaton Corporation
Ford Motor Company
Freudenberg-NOK Sealing Technologies
General Motors Company
Honda Manufacturing & Development of America, LLC
IBM Corporation
Infor
Kongsberg Automotive Holding ASA
Lear Corporation
Magna International Inc.
Nissan North America
PACCAR Inc
Robert Bosch LLC
Ryder System, Inc.
Specialty Products Company
Stellantis
Tenneco, Inc.
Toyota Motor North America
ZF Friedrichshafen AG



Certificate of Membership

PT Rimar Solusi Tangguh

Valid through 01/31/2022

A handwritten signature in black ink, appearing to read "Mina M. Cox".

Mina Cox
AIAG Chairman

A handwritten signature in black ink, appearing to read "J. Scot Shiland".

J. Scot Shiland
AIAG Executive Director

OUR CONSULTANTS & PARTNER



MARTHIN

Mining and Manufacturing
Safety Engineer & Energy
Conversion Engineer



INDRIYANI

HR, Finance &
Procurement



FRANGKY

Mining & Oil and Gas
Safety & Project
Engineeri



HANNY

Automotive &
Environment
Engineer



ENGGUN

Fire & Manufacturing
Engineer



RIO

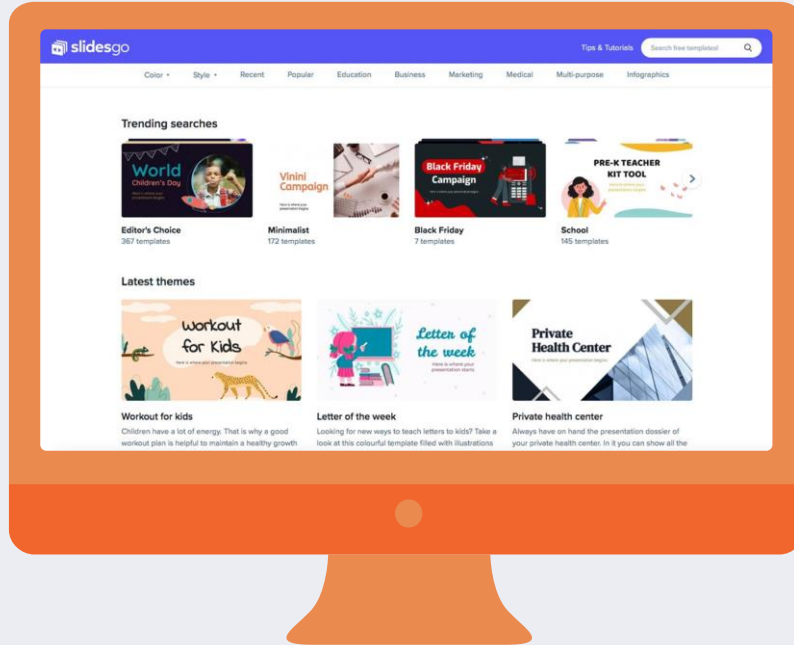
Statistical Automotive
& Ergonomic Engineer
Mining & Oil-Gas
Safety




SUJARWO

HR & Communication

OUR CONTACT



Jl Arjuna Blok B No 29, Bekasi
www.improvementqhse.com
Marketing@improvementqhse.com
improvementqhse@gmail.com
rinarsolusitangguh@gmail.com

   [improvementqhse](https://www.instagram.com/improvementqhse)
0877-178-1334

A decorative graphic in the top right corner consisting of overlapping geometric shapes in shades of purple, orange, and dark blue, with a white hexagonal outline.

THANKS!

Do you have any questions?

Contact us to marketing@improvementqhse.com or 0877-178-1334